

Gateway brings data from DLMS protocol(IEC 62056) to MODBUS TCP/RTU



Landis+Gyr
Elster
CewePrometer
ISKRA
Actaris
EMH
DPE
.....

Gateway is able to communicate with energy meters that implement IEC-62056, -21, -42, -43, -61, -53, -46 standards.

Gateway to read data on energy meters with DLMS protocol.

Istantaneous conversion read data to Modbus TCP or RTU.

The gateway reads all energy meters on the market (Landis+ Gyr, Iskra, Actaris, Itron, EMH....) with DLMS protocol.

Features

- Simple e fast configuration by VNC connection and specific configurator in the gateway
- Available for DLMS communication RS232 protocol, RS485 protocol, Ethernet port
- Modbus Map configurable by user selecting OBIS to bring on MODBUS
- MODBUS available on serial or Ethernet port
- Three different license: up to 10 energy meters, up to 25 energy meters, up to 50 energy meters
- Diagnostic on web interface



DLMS-MODBUS ADVANCED GATEWAY

SPECIFICATION

Ethernet Interface: LAN 1 x 10/100/1000 Mbps, 1 x 10/100 Mbps

Serial Ports: 1 x RS-232, 1 x RS-485

Power Input Voltage: 8 - 24 VDC

Power Consumption: Typical 9.12 W, Max 10.80 W

Mechanical: Construction Aluminum housing

Dimensions: (W x H x D) 152 x 104 x 54 mm

Weight: 0.7 kg (1.55 lb)

Operating Temperature 5 ~ 50° C (41 ~ 122° F)

Storage Temperature -40 ~ 85° C (-40 ~ 185° F)

Relative Humidity 95% @ 40° C (non-condensing)

EMC: CE/FCC Class A, CCC, BSMI

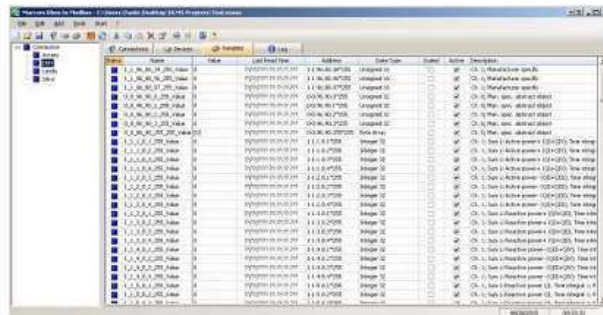
Safety Certifications: UL, CCC, BSMI, CB

EASY CONFIGURATION

Multiple connections: Different type of

connections (R485,RS232,Ethernet) supported

Automatic Variable Discovery: Possible to discover automatically all OBIS in configuration phase



ORDERING INFORMATION

GWA-DLMS-10: License up to 10 Energy Meters, 1-port RS232,1-port RS485, 1 port Ethernet

GWA-DLMS-25: License up to 25 Energy Meters, 1-port RS232,1-port RS485, 1 port Ethernet

GWA-DLMS-50: License up to 50 Energy Meters, 1-port RS232,1-port RS485, 1 port Ethernet

Optional Accessories (can be purchased separately)

TCC-100I: RS-232 to RS-422/485 converter with optical isolation, -20 to 60°C

TCC-120I: RS-422/485 converter/repeater with 2 kV optical isolation

KMK114:Optical probe with RS485 connection (3,3-12 Volt external power supply requested)

PACKAGE CONTENT

- Gateway GWA-DLMS
- Documentation and software CD
- Quick Installation Guide



Jp progress engineering co.,Ltd

www.jpprogress.com email :info@jpprogress.com ,jppe_sales@hotmail.com

Tel 02-8327253,02-8328262,Fax 02-8323590 Mobile 081-6581937