

SF-M200 Series RS232 Modem



Key Features

- Using industrial-grade wireless module
- Support low power mode, including sleep mode and time
- Use a metal shell, protection grade IP30 metal shell and system security isolation, particularly suitable for the application of industrial control field
- Standard RS232 serial port
- Wide DC Input Range (DC5-35V)
- A serial port and SIM/UIM card built-in 15 KV ESD protection
- Dimension:75(L)X50(W)X16(H)

Product Introduction

SF - M200 series is a kind of M to M transport terminals, users through operators GPRS or CDMA network for remote wireless data transmission and interaction using high-performance industrial-class wireless module development, stable performance The products are widely used in smart grid mobile POS terminals, railway coal mine fire gas water transport oilfield green street lamp monitoring and automatic data monitoring, etc

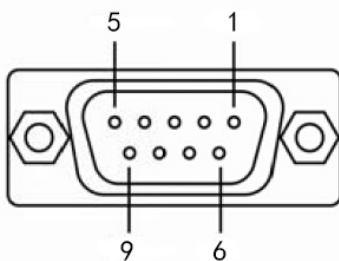
Ordering Information

Type	SF-M200G0 1	SF-M200G02	SF-M200C01	SF-M200C02
Network	GSM/GPRS	GSM/GPRS	CDMA2000 1X	CDMA2000 1x
Frequency Band	GSM 900/1800MH Z	GSM850/900 DCS1800/PCS 1900Mhz	CDMA 850Mhz	CDMA2000 1X800/1900Mhz
TCP/IP Stack	TCP, UDP, HTTP, FTP, SMTP, POP3	TCP,UDP,FTP, PPP	Supports CDMA Data services	Supports CDMA Data services
Data Transfer	GPRS Class 10	GPRS UL 85.6 kbps,DL 85.6 kbps	CDMA2000 1X(rel.0): UL 153.6 kbps /DL 153.6 kbps	CDMA2000 1X(rel.0): UL 153.6 kbps /DL 153.6 kbps
SMS/MMS	✓	✓	✓	✓

SIM/UIM interface	3V,1.8V	3V,1.8V	3V,1.8V	3V,1.8V
DATA Interface	RS232 Baud rate:115200bps	RS232 Baud rate:115200bps	RS232 Baud rate:115200bps	RS232 Baud rate:115200bps
Antenna Interface	50 Ω SMA interface	50 Ω SMA interface	50 Ω SMA interface	50 Ω SMA interface
Power Supply	5-35V	5-35V	5-35V	5-35V
Power,ring,data LED	✓	✓	✓	✓
Working temperature	Normal operation: -20°C to +55°C Restricted operation: -40°C to -20°C or +55°C to +70°C	Normal operation: -35°C to +80°C Restricted operation: -40°C to -35°C or +80°C to +85°C	Normal operation: -20°C to +70°C Restricted operation: -40°C to -35°C or +80°C to +85°C	Normal operation: -20°C to +70°C Restricted operation: -40°C to -35°C or +80°C to +85°C
Storage temperature:	-40°C to +85°C	-45°C to +90°C	-40°C to +85°C	-40°C to +85°C

COM Port interface:

DB9 Female

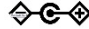


RS232 Defining

PIN	Defining	I/O	Function
1	DCD	Output	Data Carrier Detect
2	RXD	Output	DATA Receive
3	TXD	Input	DATA Send
4	DTR	Input	Data Terminal Ready
5	GND		Signal Ground
6	DSR	Output	Data Set Ready
7	RTS	Input	Request To Send
8	CTS	Output	Clear To Send
9	RI	Output	Ring Indicator

Items	Details
COM Port	1XRS232 Data bit: 5、6、7、8 bit Stop bit: 1、1.5、2 bit Checkout: no parity、even parity check、Odd Parity Check ,SPACE and MARK Check Baud rate: 110~115200bits/s (default: 115200bps) Built-in 15KV ESD protection

Power interface:

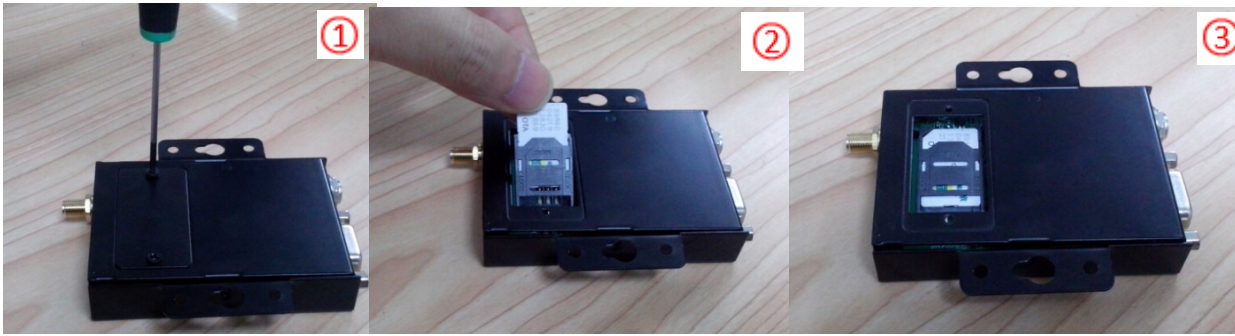
Items	Details
Standard DC interface	
Power supply	Wide Input Range, DC 5V-35V
The standard power adapter	DC 12V/1A
Operating current	125mA@+12VDC
Standby current	<38mA@+12VDC

Indicating lamp:

Items	Details
PWR	Power light: the light normally on
RING	The call light: have a call
DATA	Network status :600 ms on/off not insert SIM card or SIM card is invalid 75 ms on / 3 s off Idle mode, equipment register to the network 75 ms on / 75 ms off One or more of the GPRS context activation Normally on light, voice calls, connect to a remote party

SIM interface :

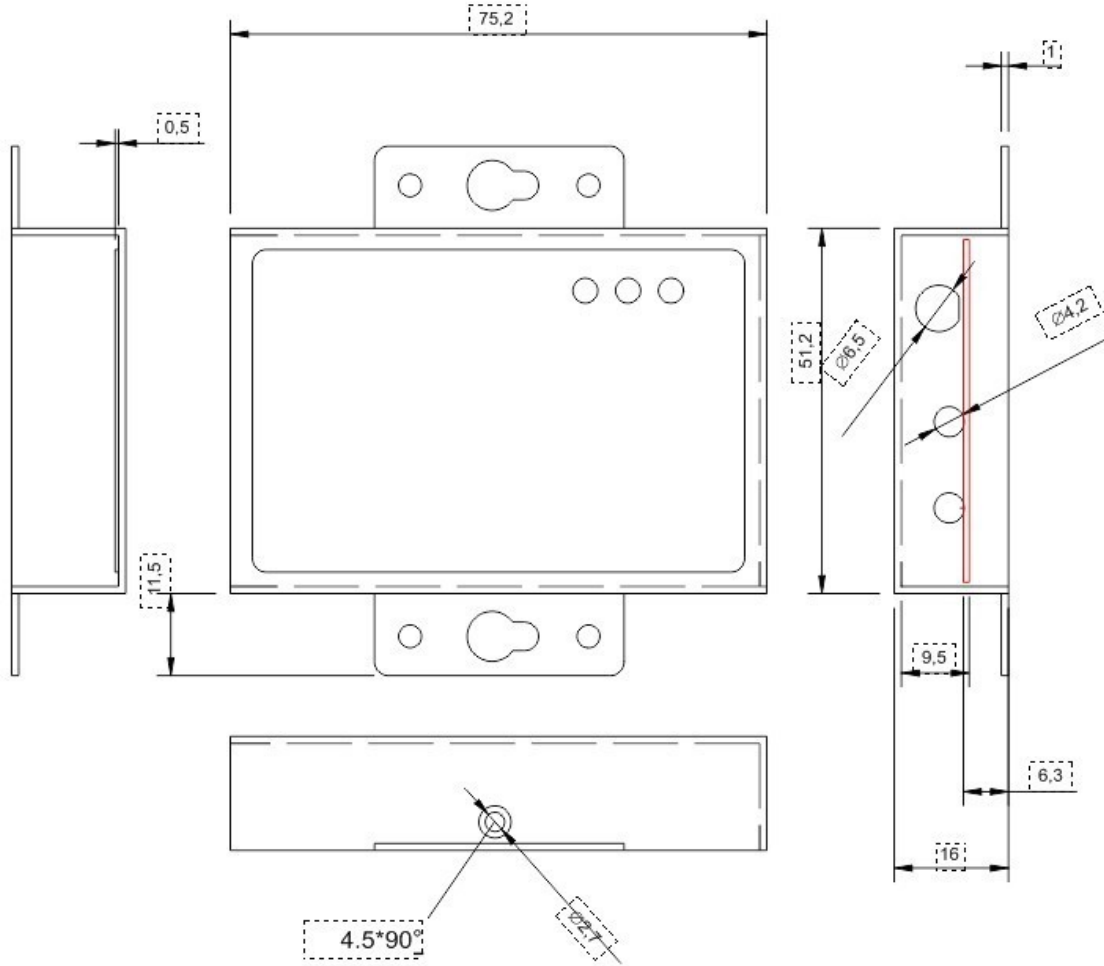
Item	Details
SIM/UIM card interface	The standard flip user card interface Supports 1.8V/3V SIM/UIM cards Built-in 15KV ESD protection



Antenna :




DIMENSIONS & CONSTRUCTION:



Product Accessories:

Items	Details
AC adapter	 <p>1X 12V/1A Power Adapter</p>

<p>RS232 Cable</p>	 <p>1X DB9 to DB9 Cable,1.5M long</p>
<p>Sucker Antenna</p>	 <p>1X Sucker Antenna 1.5M long</p>

Shi Fang Communication Technology